

Whale Watching



Enjoy lunch this afternoon at Rockafeller's Restaurant, a local favorite with a casual beach vibe and a picturesque setting. Following lunch arrive at The Coastal Virginia WineFest. Enjoy an afternoon of entertainment, live music, a grape stomp competition, vendors showcasing food, arts and crafts, a beer garden, and of course, wine! You will have the opportunity to sample wines from thirty Virginia wineries.

The remainder of the evening will be on your own to enjoy the Virginia Beach Oceanfront area and have dinner at one of the many fine restaurants. (Breakfast, Lunch)

Sunday, January 26: Whale Watching Cruise, Depart for Central Pennsylvania

After breakfast depart on a two hour whale watching cruise. The cruise offers a unique look at many species as they migrate into the coastal waters each winter. Keep an eye out for whales, dolphins, seals and seabirds!

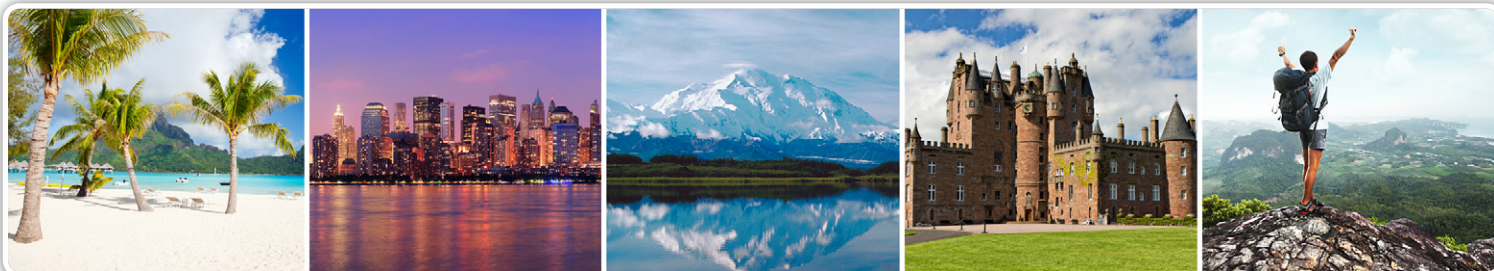
This afternoon enjoy free time for lunch on your own at Town Center before departing for Central Pennsylvania with appropriate rest and meal stops en route. (Breakfast)

Hotel and itinerary are subject to change at any time without notification and/or compensation.

Activity Level:

2

This tour requires average physical activity. You should be in good health, able to climb stairs and walk reasonable distances, possibly over uneven ground and cobblestoned streets.



GENERAL INFORMATION

TRAVEL DOCUMENTS

Two forms of identification are required for this trip. A government-issued photo I.D. (such as a driver's license), along with a secondary form of identification such as a passport, state or local government ID, copy of birth certificate, social security card or Medicare card. Must be 21 years old with a valid I.D. for wine tasting

PAYMENT

\$150 per person deposit due at the time of booking to confirm your reservation. Final payment is due to AAA by December 1, 2019.

Solo Travelers Rewards Club maximum voucher redemption: \$50

CANCELLATION/PENALTIES

A \$25 per person cancellation fee will be charged by Discoveries in addition to any other supplier's fees. From December 1, 2019 to day of departure no refunds.

INSURANCE

For your protection AAA recommends travel insurance. Pre-existing medical conditions may be waived with proper coverage if travel insurance is purchased within 14 days of initial deposit only. Other conditions may apply; ask your travel agent. AAA recommends Allianz.

CLOTHING/CLIMATE

Temperatures for the Virginia region in January average in the 50s. Casual clothes and comfortable walking shoes are recommended; be prepared for potential inclement weather.

TRAVEL ASSISTANCE

For personal comfort, group participants who need assistance are required to have a traveling companion who is capable of and totally responsible for providing the needed assistance.

CONSUMER DISCLOSURE NOTICE - PART OF CONTRACT OF SERVICE.

PLEASE READ THIS NOTICE, IT CONSTITUTES PART OF YOUR CONTRACT FOR TRAVEL-RELATED SERVICES.

AAA TRAVEL is acting as a mere agent for SUPPLIERS in selling travel-related services, or in accepting reservations or bookings for services that are not directly supplied by this travel agency (such as air and ground transportation, hotel accommodations, meals, tours, cruises, etc.). This agency, therefore, shall not be responsible for breach of contract or any intentional or careless actions or omissions on part of such suppliers, which result in any loss, damage, delay or injury to you or your travel companions or group members. Unless the term "guaranteed" is specifically stated in writing on your tickets, invoice, or reservation itinerary, we do not guarantee any of such suppliers' rates, bookings, reservations, connections, scheduling, or handling of personal effects. Travel agent shall not be responsible for any injuries, damages, or losses to any traveler in connection with terrorist activities, social or labor unrest, climatic conditions, abnormal conditions or developments, or any other actions, omissions, or conditions outside the travel agent's control. Traveler assumes complete and full responsibility for, and hereby releases the agent from any duty of, checking and verifying any and all passport, visa, vaccination, or other entry requirements of each destination, and all safety or security conditions at such destinations. For information concerning possible dangers at international destinations, contact the Travel Advisory Section of the U.S. State Department. For medical information, call the Public Health Service. By embarking upon his/her travel, the traveler voluntarily assumes all risks involved in such travel, whether expected or unexpected. Traveler is hereby warned of such risks, and is advised to obtain appropriate insurance coverage against them. Traveler's acceptance and retention of tickets, reservations, or bookings after issuance shall constitute a consent of the above, and an agreement on his/her part to convey the contents hereto to his/her travel companions or group members.

GRP3620 04/19

For reservations or more information, please contact:

Carlisle	717-243-1846	Huntingdon	888-222-3575	Lititz	717-626-3040
Gettysburg	717-334-1155	Lancaster	717-898-6920	West Shore	717-761-8347
Harrisburg	717-657-2244	Lebanon	717-273-8534		
Hershey	717-533-3381	Lewistown	888-222-3575		